

EXPANSION CLOSURE PLATE ASSEMBLY INSTRUCTIONS

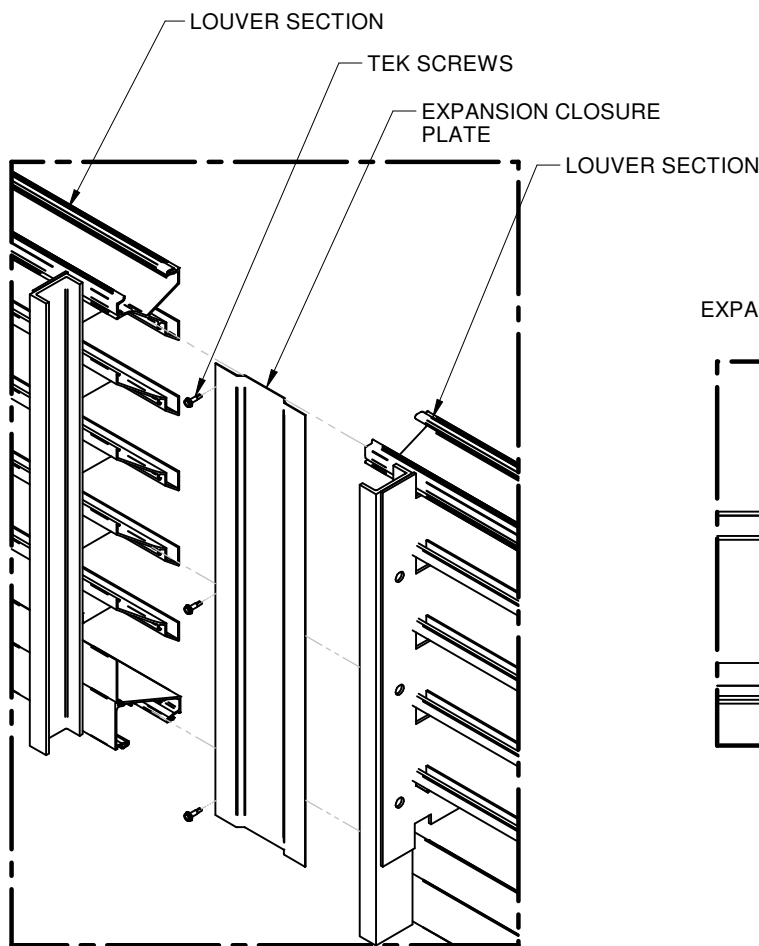
ACTIVE SECTIONS

1. Slide the expansion closure plate between the channels of two continuous blade style louvers.
2. Fasten the expansion closure plate to one louver channel with Tek screws approximately 12" on center (Detail A).

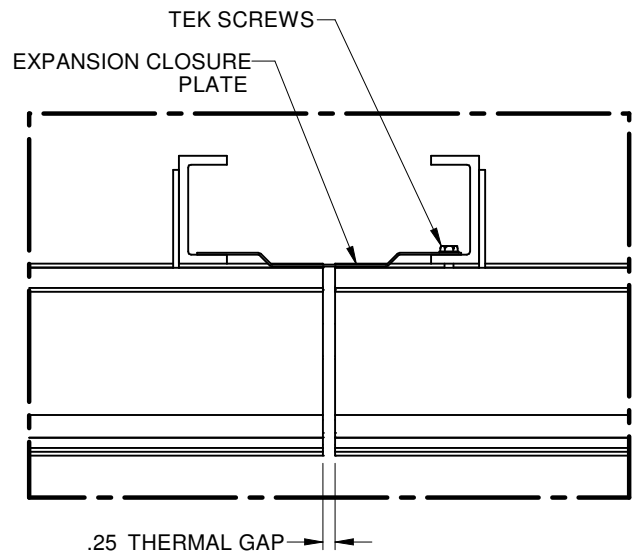
Note: Only fasten the expansion closure plate to one louver to allow for thermal movement. An extended hex head driver and impact drill will aid in assembly.

3. Separate the adjacent louver by 1/4" for thermal movement (Detail B).

Note: Expansion closure plates are non-structural. Additional structural support is required for multi-section louvers



DETAIL A: BACK VIEW



DETAIL B: TOP VIEW

TITLE	
EXPANSION CLOSURE PLATE ASSEMBLY INSTRUCTIONS	
DRAWING NUMBER	271054
SHEET	1 OF 2
© COPYRIGHT PRICE INDUSTRIES 2019	

EXPANSION CLOSURE PLATE ASSEMBLY INSTRUCTIONS

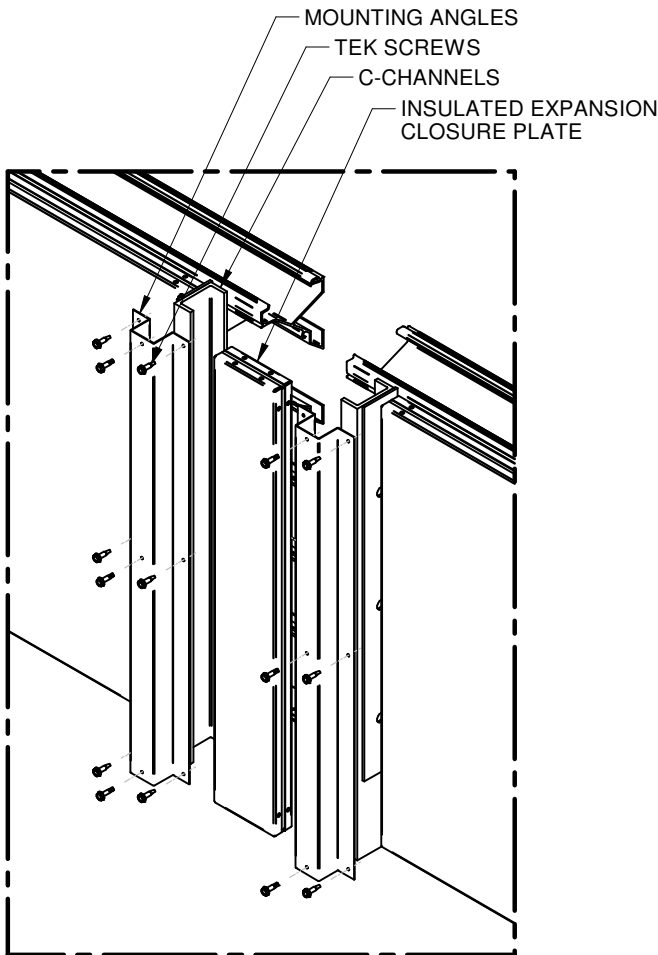
INACTIVE SECTIONS

1. For inactive louvers (with blank-off panels), fasten the insulated expansion closure plate mounting angles to the louver c-channels with the provided Tek screws approximately 12" on center.
2. Fasten the insulated expansion closure plate to one mounting angle (with the provided Tek screws approximately 12" on center) (Detail C).

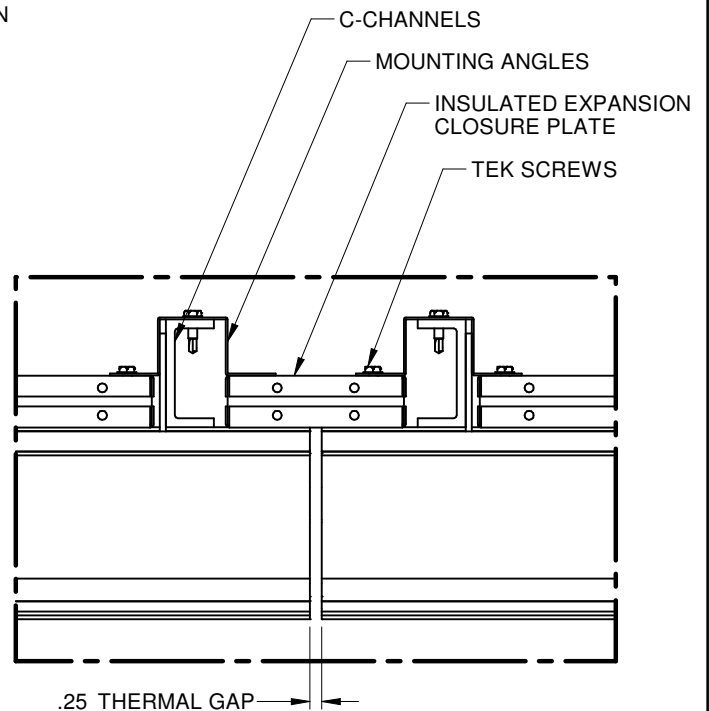
Note: Only fasten the insulated expansion closure plate to one louver to allow for thermal movement. Additional insulation can be applied to the back of the mounting angles for reduced heat transfer.

3. Separate the adjacent louver by 1/4" for thermal movement (Detail D).

Note: Expansion closure plates are non-structural. Additional structural support is required for multi-section louvers



DETAIL C: BACK VIEW



DETAIL D: TOP VIEW

TITLE		
EXPANSION CLOSURE PLATE ASSEMBLY INSTRUCTIONS		
DRAWING NUMBER	271054	SHEET
		2 OF 2
© COPYRIGHT PRICE INDUSTRIES 2019		